

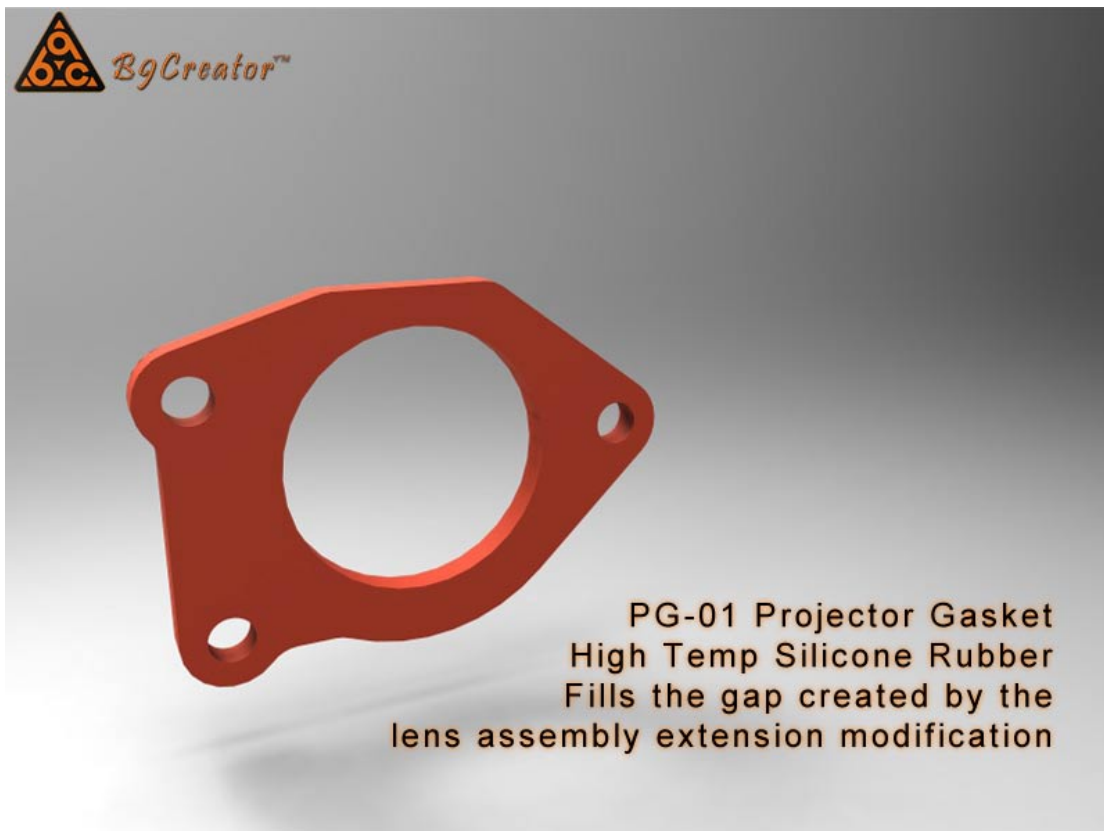


**The B9Creator™**

Copyright 2013 B9Creations, LLC All Rights Reserved

## **Visual Upgrade Guide, v1.0 to v1.1, OPTION 1**

### **Step 1 - Install Dust Gasket**

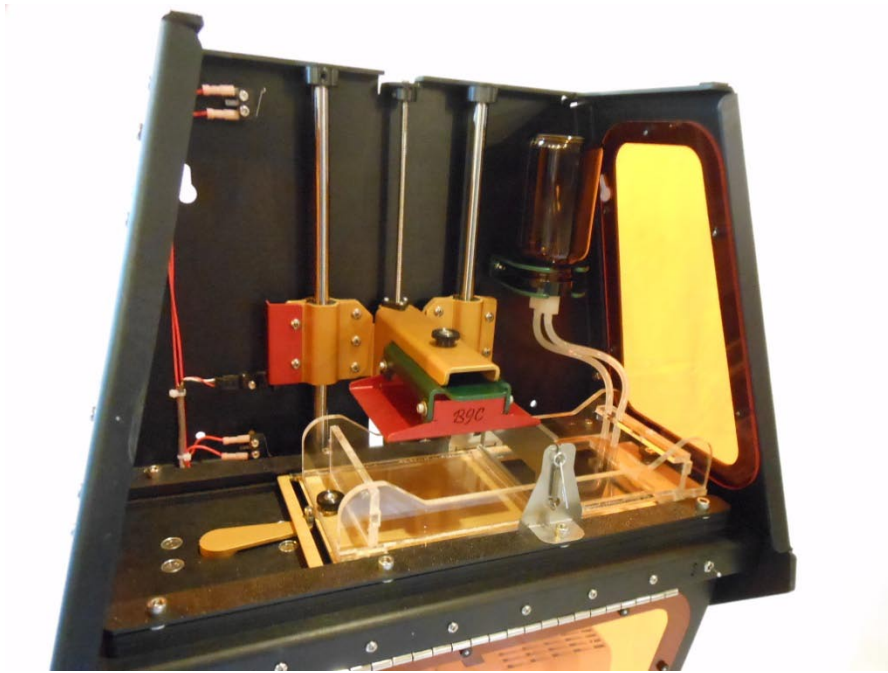


Locate the PG-01 Projector Gasket.

Install the gasket using the excellent instructions provided by Brian Pierce. Note that these instructions show a black, double layer gasket. Simply substitute the provided, single layer, thicker gasket shown above and follow the provided directions found here:

<http://b9creator.com/downloads/DustGasketInstructions.pdf>

## Step 2 - Remove The Obsolete Parts



The B9Creator v1.0

The Option 1 Upgrade removes the resin bottle & holder, adds a deeper vat, upgrades the sweeper assembly and build table bracket.



Remove the resin bottle and bracket. These parts will not be reused.



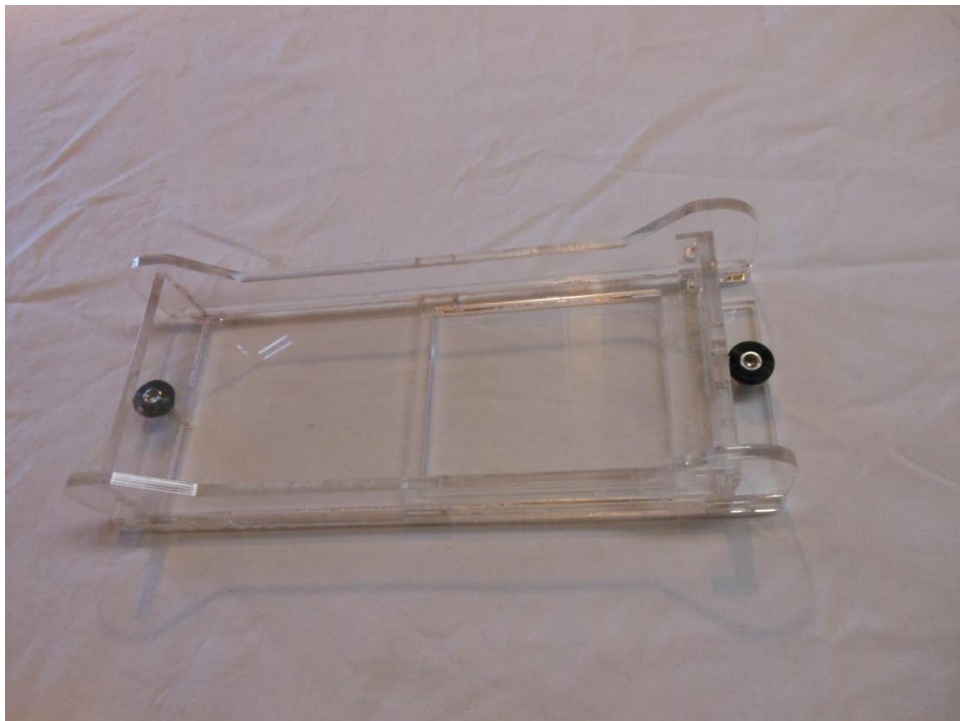
The bottle and bracket are removed.



Remove the build table and bracket.

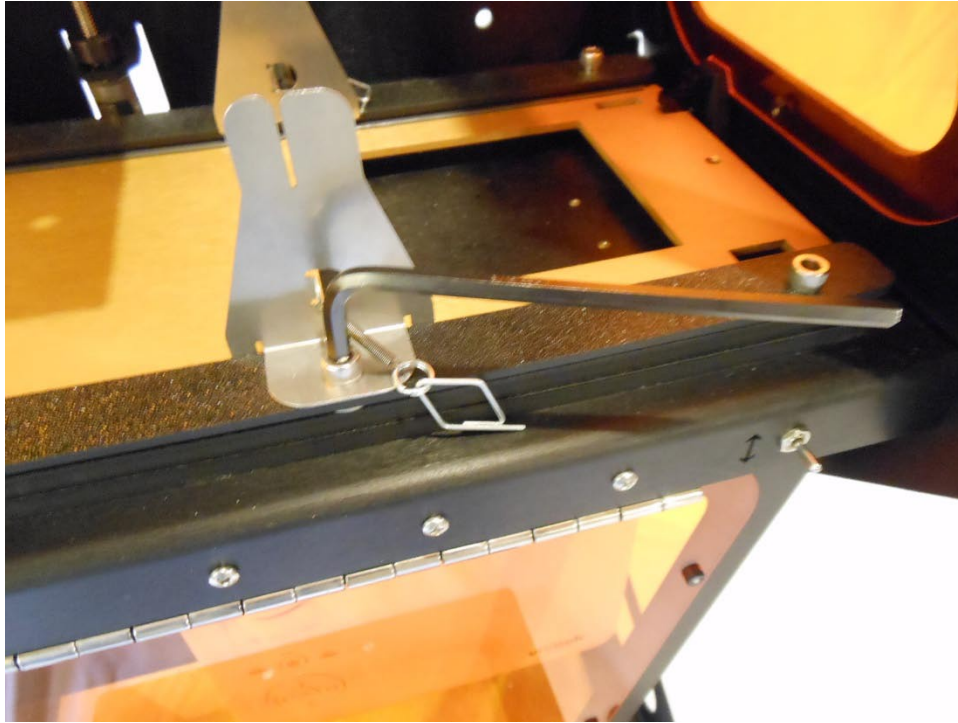


Remove the sweeper



Remove the VAT





Remove the front and back sweeper brackets

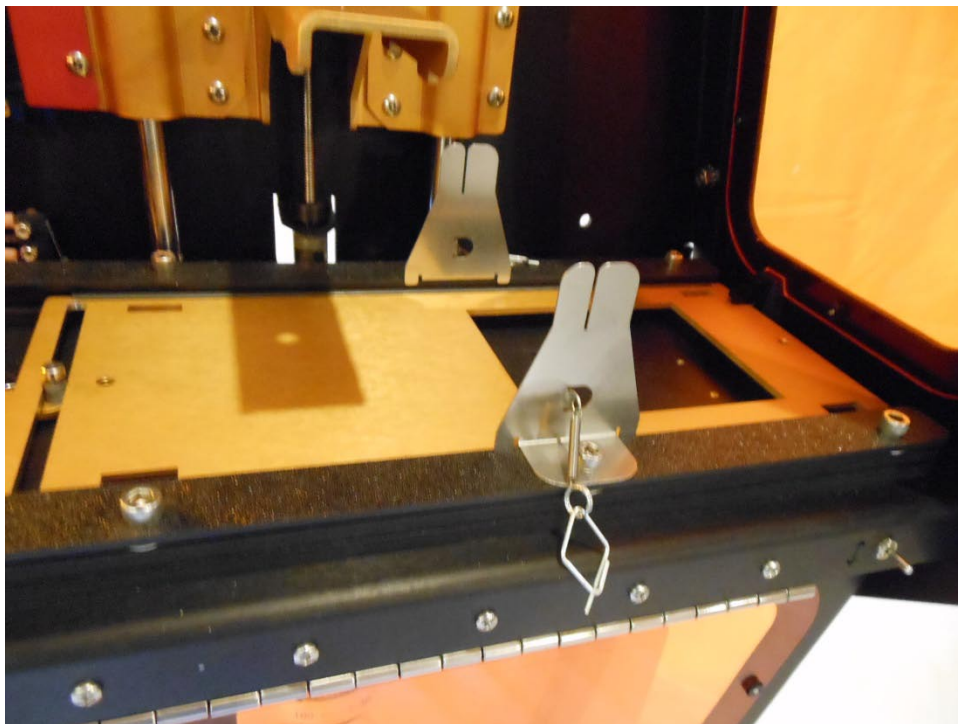


Carefully remove the spring, loop and handle from the brackets

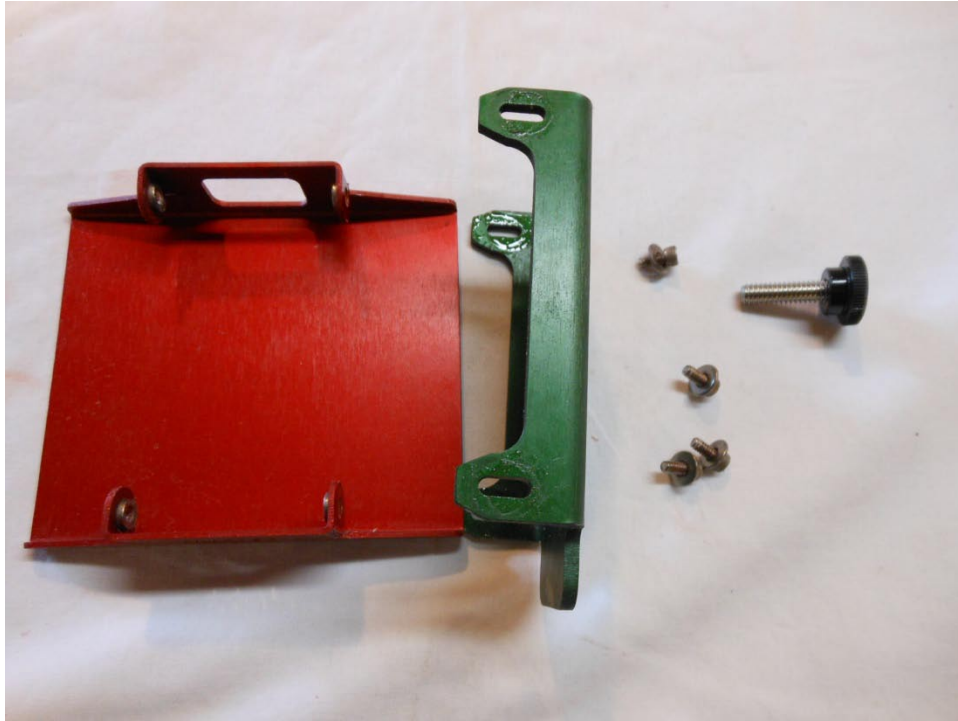
### Step 3 - Install New Parts



Attach the spring, loop and handle to the NEW sweeper brackets. The back bracket is pictured on the left, the front bracket on the right.



Re-attach the sweeper brackets as shown, pay attention to front vs back.

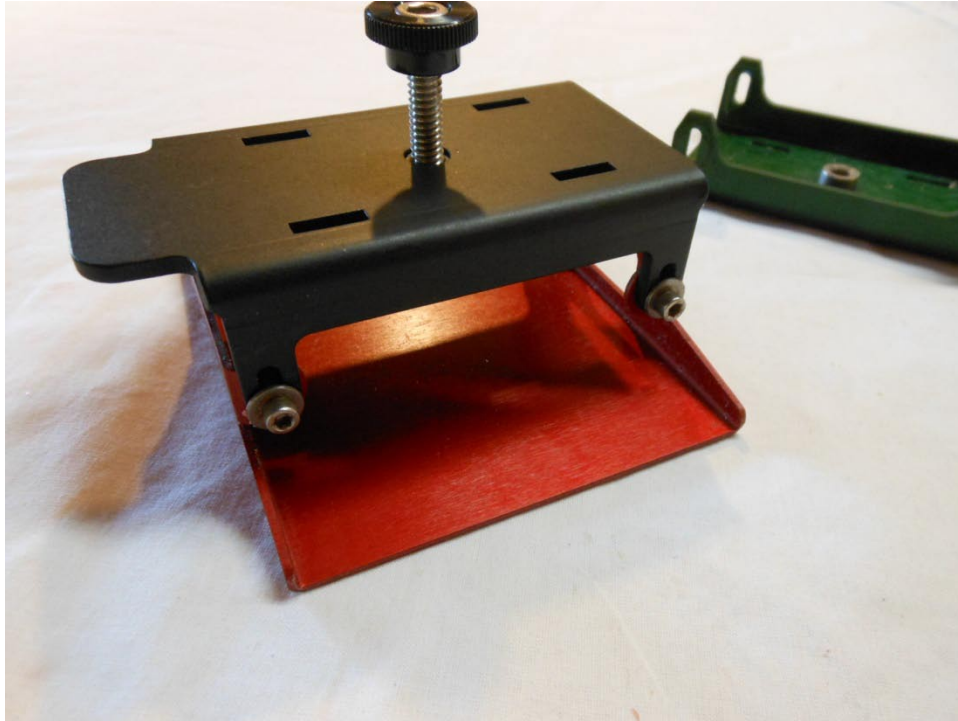


Remove the old, short legged, build table bracket from the red build table

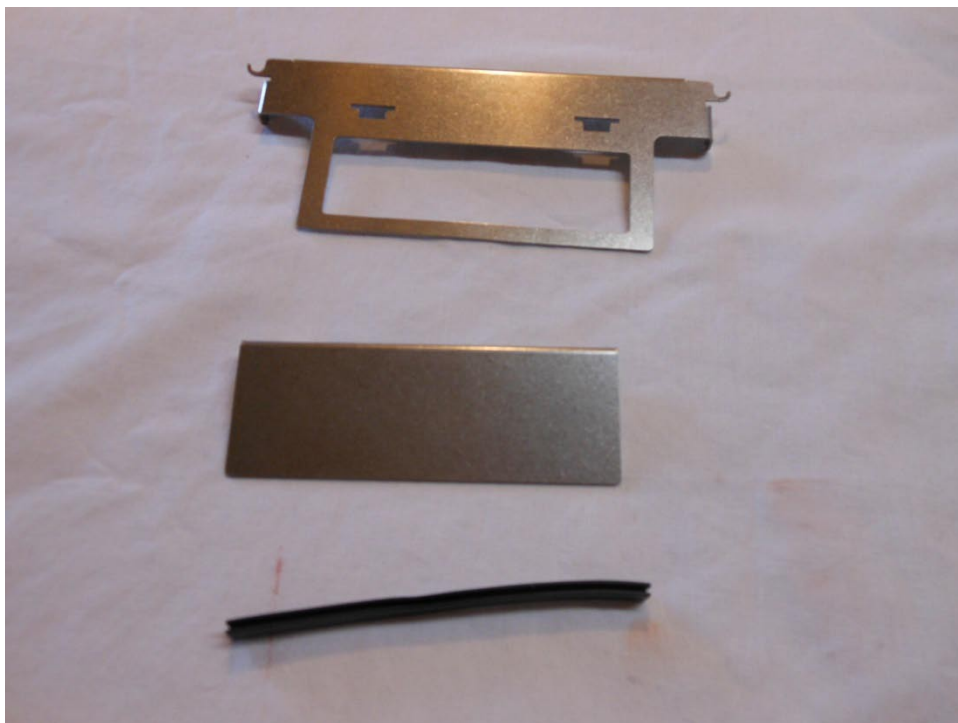


Reassemble using the new bracket with longer legs





Leave the four screws loose so the table can calibrated later.

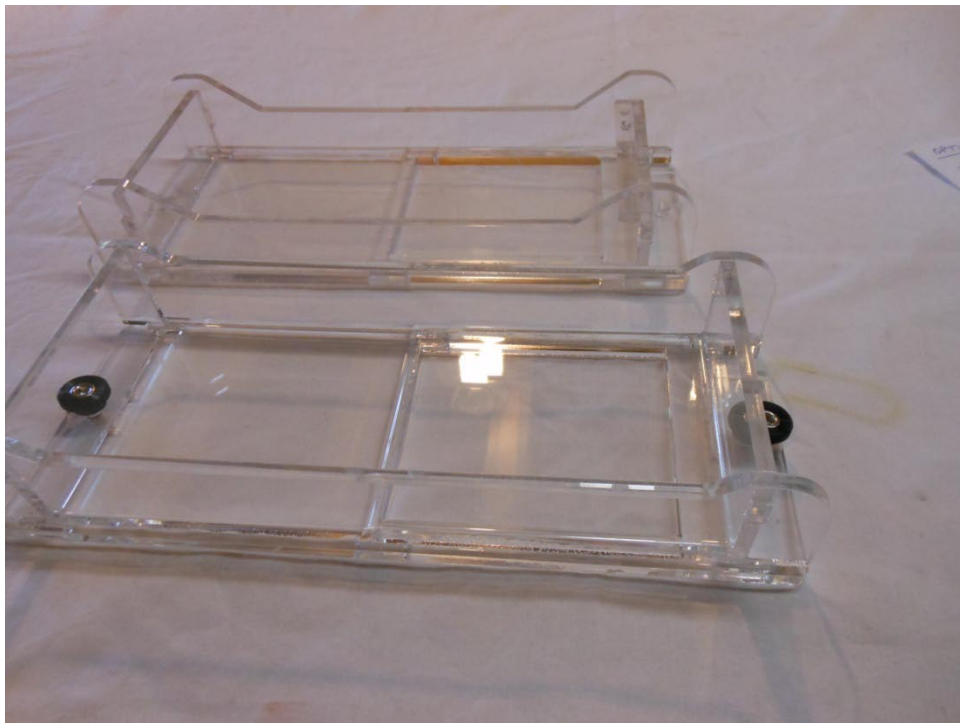


Locate the new sweeper components

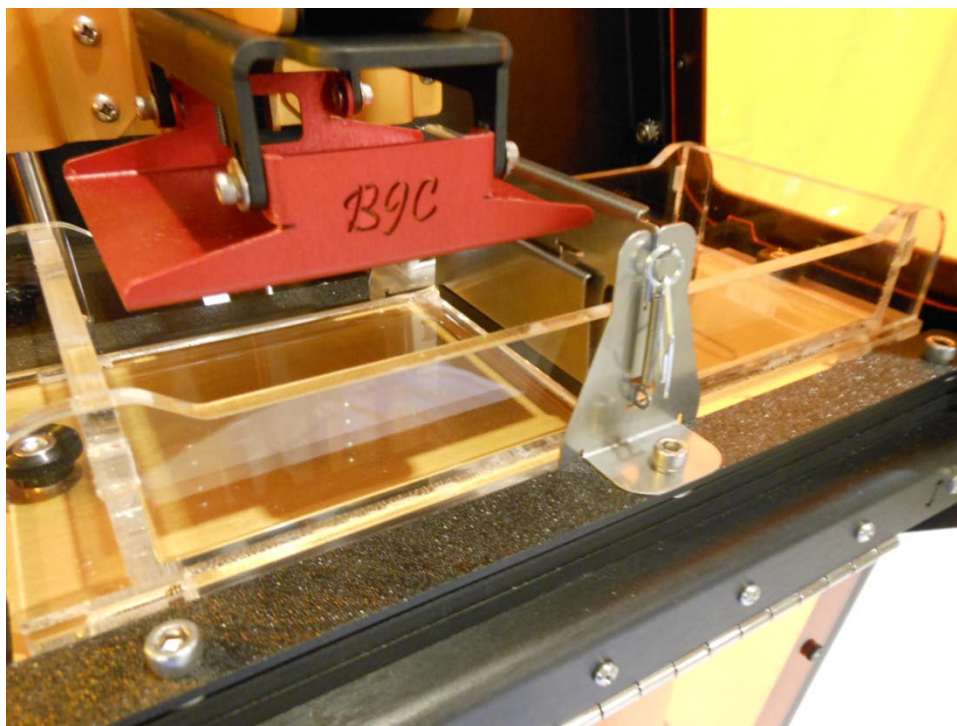




New Sweeper assembled



New VAT ready to go, note that you can still use the old VAT in v1.0, just be careful not to overfill it.



The upgraded components in place.

Remember to recalibrate before printing.

Be sure to download the latest version of B9Creator software (v1.4 or greater).

To complete the upgrade you must run B9Creator software and perform the following actions:

Connect your power transformer and USB cord (the video cord is not needed for this operation).

In B9Creator, select File->B9Creator Terminal Utility...

In the B9Creator Terminal Utility Dialog Box, in the lower right corner, click in the "Send:" text box.

Type the following text (no quotes) "Y8135" and hit Enter.

This will reset the home position from the v1.0 value of 8985 to the v1.1 value of 8135. Failure to do this will likely result in the build table hitting the lower limit switch during the build table calibration.

**Finished!**